

Multistripper mini

Manual



SCANMASKIN
MACHINES-MINERALS-KNOW-HOW

www.scanmaskin.com

Dear Customer!

Thank you for choosing Scanmaskin as your supplier.

We wish you all the best with your new Multistripper mini and hope that it meets your expectations.

Scanmaskin Sweden AB



Paulo Bergstrand
Managing Director

Address:
Scanmaskin Sweden AB
Box 187
SE-437 22 Lindome / Gothenburg
Sweden
Telephone: +46 (0) 31 99 49 70
Fax: +46 (0) 31 99 48 70
www.scanmaskin.com

Important Information!

This User Guide only concerns the floor stripper machines “**Multistripper mini**” approved by Scanmaskin Sweden AB.

If Multistripper mini is used for other purposes or handled in ways other than that described in this User Guide, Scanmaskin Sweden AB disclaims all responsibility.

Especially note the section “2 Safety notes”. Read the User Guide before using the floor stripper machine Multistripper mini. The spare parts and knives that are used on Multistripper mini must be approved by Scanmaskin Sweden AB.

Table of Contents

1	Primary notes	5
1.1	General notes for the operator	5
1.2	Description of the Multistripper mini	5
1.3	Storage.....	5
1.4	Conformity	5
1.5	Description	6
1.6	Accessories.....	6
2	Safety notes.....	7
2.1	General information	7
2.2	Designated use	7
2.3	Dangerousness of the machine.....	7
2.4	Basic safety notes.....	7
2.5	Prerequisites for the user.....	8
2.6	Inspection with accordance with VBG 4 § 5 (1) Nr. 2.....	8
2.7	Safety notes	8
2.7.1	Safety instructions (operation).....	8
2.7.2	Safety notes noise	9
2.7.3	Sound level and vibration	9
2.7.4	Safety notes operation.....	9
3	General instructions for the user	10
3.1	Scope of delivery.....	10
3.2	Dimensions / Weight / Technical details	11
4	Assembly	11
5	Transport.....	11
6	Operation	11
6.1	Preparation of the machine.....	11
6.2	Preparation of the subsurface	12
6.3	Starting the machine.....	12
6.4	Tips.....	12
7	Maintenance and repair.....	12
7.1	General information	12
7.2	Cleaning and maintenance	13
7.3	Changing the blade.....	13
7.4	Safety notes maintenance	13
8	Annex E: Spare parts list	14
8.1	Exploded drawing – Motor	14
8.2	Exploded drawing – Attached parts	15
8.3	Spare parts list – Attached parts.....	16
8.4	Exploded drawing – Handle.....	17
8.5	Exploded drawing – Handle for handstripper	18
9	Warranty	19
10	EU Declaration	20
11	Contact information	21

1 Primary notes

1.1 General notes for the operator

As an operator you are responsible for:

- The proper and normal operation by trained persons only,
- The adherence to the safety regulations, the safety notes, and the provisions referring to working safety and accident prevention,
- The technical instruction of the operation personnel on the equipment and their reading of the operation instructions of the equipment.

1.2 Description of the Multistripper mini

The Multistripper mini is used for removing pasted flooring coverings like PVC,-CV-, lino and carpeting floorings. The blade is eccentric propelled; thus, the blade peels the flooring covering from the concrete.

1.3 Storage



Caution!

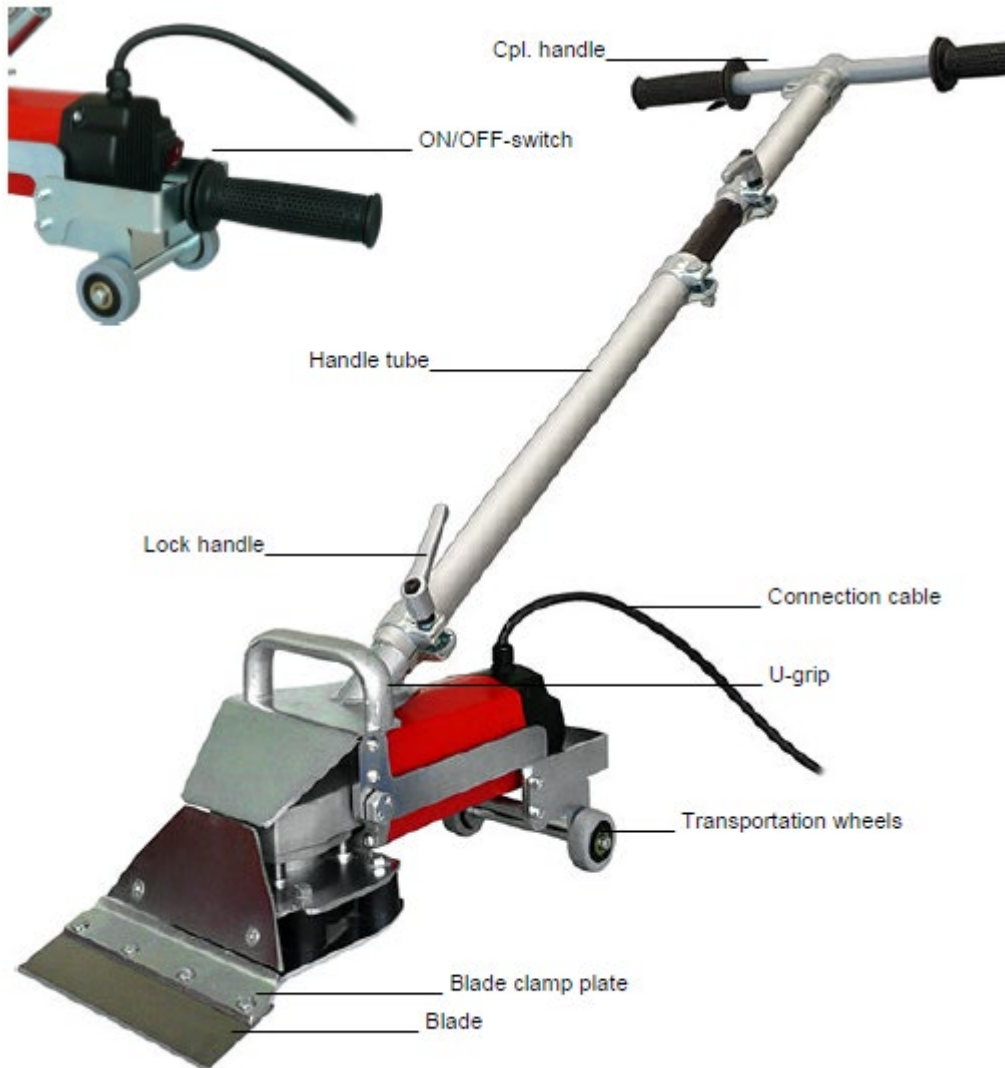
Please store the machine dry.

Please store the machine without blade to avoid injuries!

1.4 Conformity

The machine is constructed and produced according to harmonized norms. The Declaration of conformity according to the regulations of the guidelines 98 / 37 / the EC and 89 / 336 / European Economic Community is added at the end of the manual.

1.5 Description



1.6 Accessories

Standard accessories: 1 x Blade 60mm x 210 mm, Art. No. 17.14580
1 x Metal holder for conversion to Handstripper

Optional accessories: Blade for Multistripper mini "plus", Art. No. 17.14581
Special blade 60mm x 210mm hardened, 1,5mm thick

Blade 130mm x 210mm, Art. No. 17.14590,
long execution for softer floors

U-blade 60mm x 210mm, Art. No. 17.14592,
U-shape, self-cutting due to the 45° bent edges

Jumbo blade teflon coated, waved 60mm x 210mm,
Art. No. 17.14595, recommended for carpet with felt back, PVC
and lino 3,3mm.

2 Safety notes

2.1 General information

Adherence to the safety notes helps to protect against injuries and reduces the risk of an improper utilization of the machine. Every user of this machine and personnel charged with the assembly, maintenance or repair of this machine must have read and understood the contents of the instructions prior to starting any work.

2.2 Designated use

The Multistripper mini is constructed for removing pasted flooring coverings like PVC,-CV-, lino and carpeting floorings.

Using the machine outdoors is not allowed.

If the machine is used for purposes other than those intended, the manufacturer of the machine can not be held liable for any damage to persons, property or pets resulting from such misuse.

2.3 Dangerousness of the machine

The Multistripper mini was designed and produced for its intended use in accordance with the latest basic safety and health regulations.

Due to the fact that the machine is small and compact the user is tempted to use it improperly.

This can bear unforeseeable risks.

If the machine is switched on while being lifted away from the floor, there is danger of injuries. Things may be damaged or destroyed.

2.4 Basic safety notes

The Multistripper mini was designed and constructed for its intended use in accordance with the generally approved rules of technology, the industrial safety and accident prevention regulations, and the directive for the safety of machines of the EC.

- Certain dangers may be occurring during the operation of the machine despite all safety and security measures and facilities. This is especially true if
 - improper operation or
 - improper application are the cause.
- Failing to adhere to the operation instructions, in particular to the safety notes, will create danger of injuries or even of fatal injuries as also danger of damage to physical assets.



Warning, Danger of electrical shocks. Do not use damaged lines and plugs. The machine may be operated only in a technically flawless condition and with all safety facilities fully operational.

2.5 Prerequisites for the user

The users of the machine are required to

- Be instructed with the operation of the machine,
- Be familiar with and able to execute the operations required for the handling and assembly of the machine,
- Be aware of and know the applicable safety regulations for the operation of such machines and adhere to these,
- Be informed about possible additional local (national) regulations (e.g. with respect to safety facilities),
- Be informed about potential threats and dangers arising from the operation of such machines.

2.6 Inspection with accordance with VBG 4 § 5 (1) Nr. 2

The user is responsible for ensuring that the machine is inspected with respect to its proper operation in intervals of 6 months. The inspection may only be executed by a skilled electrician or by personnel that has been trained in electrical skills, provided that suitable measuring and test equipment is used.

2.7 Safety notes

With nonobservance or disregard of these instructions heavy injuries and/or damages can be caused. Read and keep all safety notes.

2.7.1 Safety instructions (operation)



Warning! Life in Danger!

When crossing and damaging the electrical cable: DANGER due to electric shock!

Perform a safety check prior to each start of the machine:

- Inspect the connecting cables and connectors/plugs for damage and improper connected load.
- Route the electrical cables properly to prevent persons tripping over them.
- Do not switch on the machine until it is in working position.
- Hold the machine firmly with both hands at the handle.
- Switch of the machine immediately when the operation is completed.
- Secure the machine against accidental tilting over.



Should there be problems with the electricity supply (protections, relays etc.) please contact a specified electrician.



Switch off and disconnect the machine for maintenance and repair.



Never use the machine with a defective cable; this can lead to an electric shock. Do not pull the machine at the cable. Use only intact plugs and cables.



It can come for injuries or deaths by electric shock if the cable is damaged. Hold the cable far from the lower part of the machine, so that it cannot get into contact with the blade. Lead the cable always to the back away.



Should the machine not be properly connected to the electric system, this can lead to deaths by electric shock. For a maximum protection against electric blows you use please an electric system with safety switch.

Suggested maximum cable length 7 m, for longer cables use a bigger cross section. With the use of the machine with cable of insufficient cross section and/or excessive length, this can lead to material damages or personal damages.

Please use only admitted cables with two leaders.

2.7.2 Safety notes noise



The noise that is created during the operation of the machine depends on many factors. All the possible application types and the local regulations, such as the size of the rooms and the features of the ground affect the development of the noise.

Therefore the local operator has to assess the effect and order the precautionary wearing of ear protections.

2.7.3 Sound level and vibration

Sound pressure*	95 dB(A)
Sound power*	108 dB(A)
Vibration	16,3 m/s ²

* Sound level according to CEN/TC 255 N

2.7.4 Safety notes operation



Keep hands, feet and not sticking parts of the clothes far from the machine parts located in work. The parts in movement of this machine can cause heavy injuries and/or damages.



With the use of a not completely mounted machine injuries can originate to persons and/or things. Do not use the machine, before this has been completely mounted. Keep all connection elements closed.



Do not screw or rivet signs on the machine, you can destroy the protective insulation! We recommend stickers!



Maintenance and repair by uncertified staff can lead to injuries or damages and reduces all guarantee achievements.



Should the machine be exposed to water or rain, it can come to deaths by electric shock. The machine must be stored in a dry building.

3 General instructions for the user

3.1 Scope of delivery



Item Description Article no.

- 1 Multistripper mini Roll with T-handle 17.14575
- 2 1 x blade 60mm x 210mm (dismounted) 17.14580
- 3 Wrench 10-13 67.00315
- 4 Metal holder for conversion to Handstripper (demounted) 42.02065

ITM	DESCRIPTION	ARTICLE NO.
1	Multistripper mini with T-handle	17.14575
2	1x blade 60mm x 210mm (dismounted)	17.14580
3	Wrench 10-13	67.00315

4	Metal holder for conversation to Handstripper (demounted)	42.02065
5	Operation Manual	

3.2 Dimensions / Weight / Technical details

Total weight: 14,3 kg

Technical details:

Rotation: 6600 rpm

Power: 2200 W

Voltage: 230 V (120 Volt)

Working width: 210 mm

4 Assembly

- Connect separated handle tubes:
Long tube with clamp – adapter tube – short tube – handle with clamp.
- Put the cables in such a way that no trip traps can originate and it cannot be damaged. Fix the blade as described in chapter 7.3 „*Changing the blade*“



Note!

Now the machine is ready for operation. The electrical connection with the mains will be done only on site.

5 Transport

In many cases it is inevitable to transport resp. carry the machine to the point of utilization. Due to the low weight and the manual measurements no instruction references are required for this.

Total weight of the machine: 14,3 kg



Caution, Fragile!

Do not throw the machine and do not transport it without securing it onto the load area.



Note!

Now the machine is ready for operation. The electrical connection with the mains will be done only on site.

6 Operation

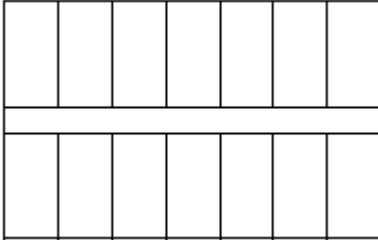
6.1 Preparation of the machine

Adjust the handle

For a light and exact use of the machine the right height setting of the handle is important. Adjust the handle as described in chapter 4 „*Assembly*“

6.2 Preparation of the subsurface

Before placing the machine cut the floor in stripes, pay attention to the working width of the Multistripper mini of 210mm. In the case of strong pasted floors, cut it in more narrow stripes.



As far as possible please remove the floor covering with the clamp (17.13630)



We recommend removing a first stripe in the middle of the room, where you can place the Multistripper mini.

6.3 Starting the machine

- Connect the Multistripper mini to the plug.
- Switch on the Multistripper mini at the switch.
- Place the Multistripper mini in the cut area and stripe a complete stripe through the room. Afterwards place the Multistripper mini across the cut stripe.
- Pull the machine back with the chassis

6.4 Tips

- Pay attention that the blade is always sharp. Keep your working surroundings clean and freely from rubble to avoid an unnecessary wear of the knife.
- Do not work in a steeper angle when the underground is softish.
- Do not cut strips wider than the working width of 210mm.
- Work from the middle of the room to the wall.
- Take care of the cable, work to the opposite direction from the power socket.
- Use the waved Jumboblade in Teflon in the case of strong pasted flooring coverings (No. 17.14595)
- Do not use the 130mm blade if you have harder coverings, it could be too flexible.
- The phase of the blade can be used differently – upwards or down showing. With down showing phase the blade can sharpen itself (depends on subfloor!)

7 Maintenance and repair

7.1 General information

The tools necessary for the maintenance repair and service works that have been described below is included in the delivery extent of the machine.

Scanmaskin has planned maintenance and repair works for the Multistripper mini. Only the activities that have been described below can be applied.

When doing so, it is imperative to keep the default and the described procedures. The application of original spare parts guarantees the dependable utilization of the machine in the future.

The following works have been planned:

- Cleaning (chapter 7.2)
- Changing the blade (chapter 7.3)

7.2 *Cleaning and maintenance*



Caution!

Pull out the plug from the power connection before cleaning! Once per week - with frequent use more often - carry out:

- Clean the chill air openings
- Blow out with dry pressure air the engine
- Remove the floor covering leftovers



Caution!

Exchange the wear parts in time!

7.3 *Changing the blade*



Caution!

Danger of cutting for the hands! Wear protective gloves!

- Unfasten the hexagonal nuts, key width 10mm, approx. half a rotation with the provided double ring key.
- Pull out the blade.
- Insert the new blade with the phase upwards.
- Fasten the hexagonal nuts.

7.4 *Safety notes maintenance*



Note!

For all works the following can be applied in general:

- The works must be done by trained personnel only.

- Any work performed on the electrical equipment may be carried out by skilled electricians only.
- The utilisation of original parts guarantees the necessary technical specifications.



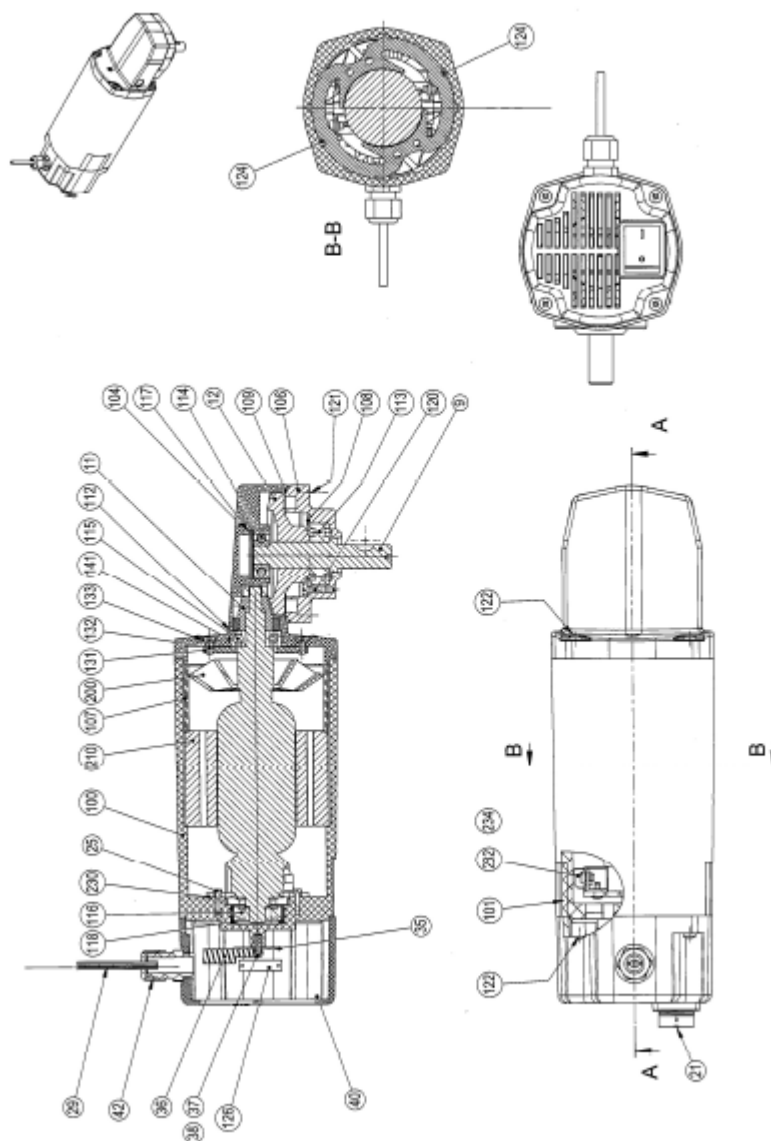
Caution!

Material damages are possible!

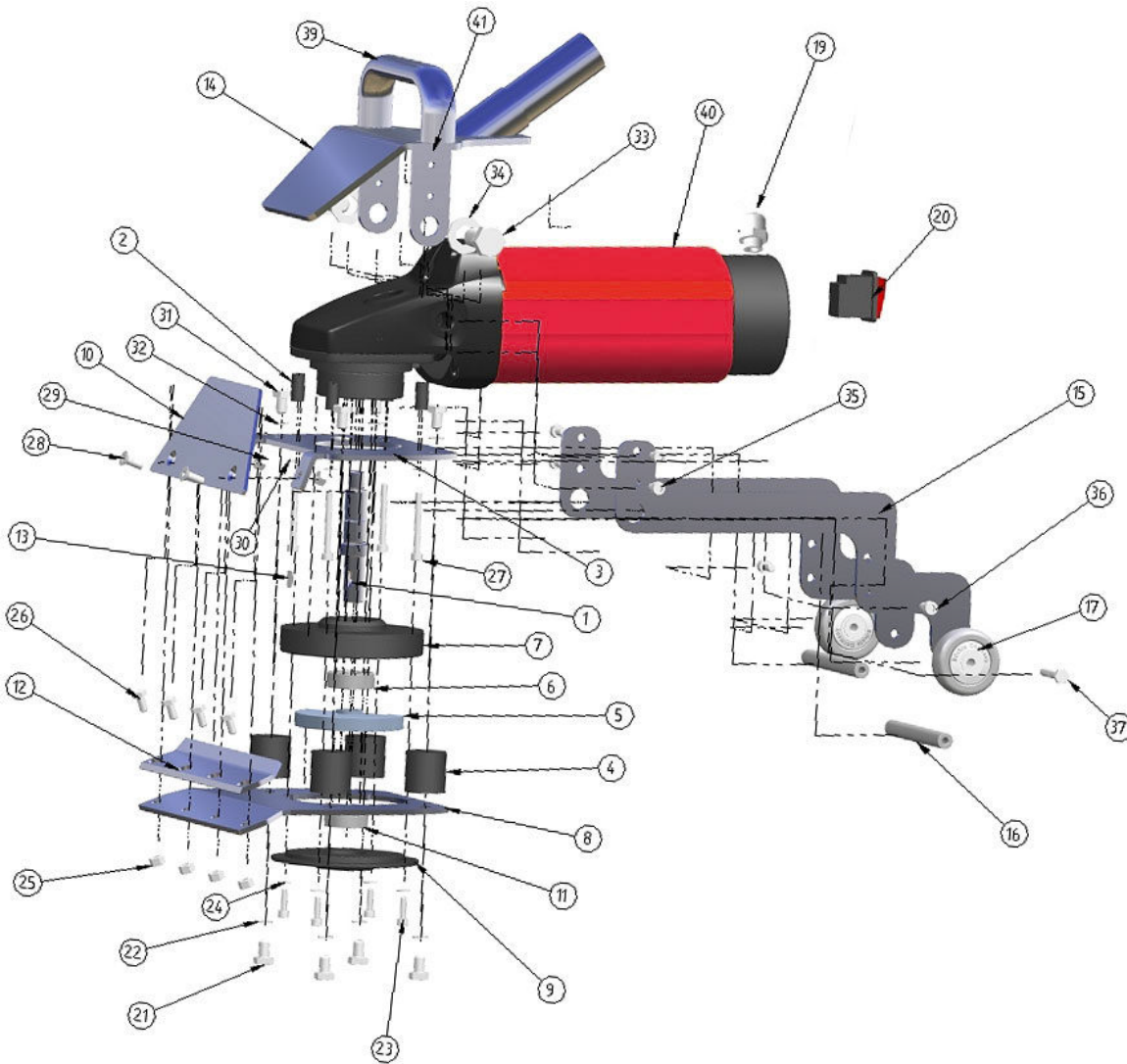
The works have to be done carefully and with suitable tools, so that no other parts of the machine are damaged during the possible slipping of the tool.

8 Annex E: Spare parts list

8.1 Exploded drawing – Motor



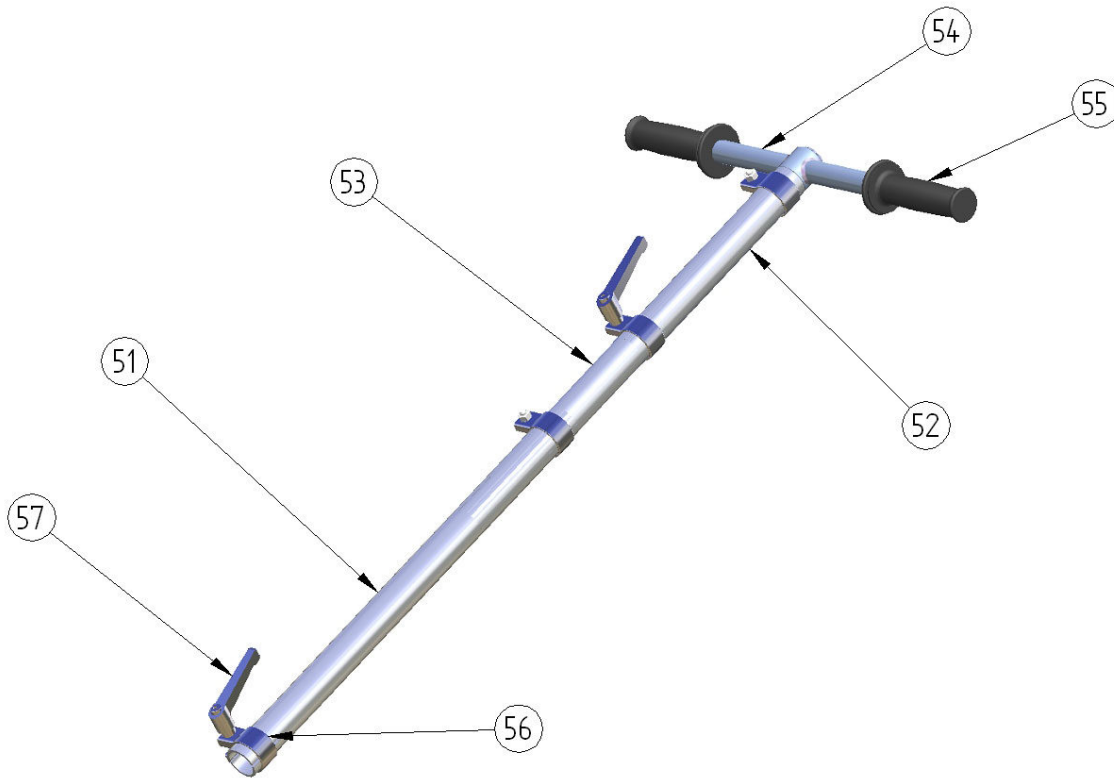
8.2 Exploded drawing – Attached parts



8.3 Spare parts list – Attached parts

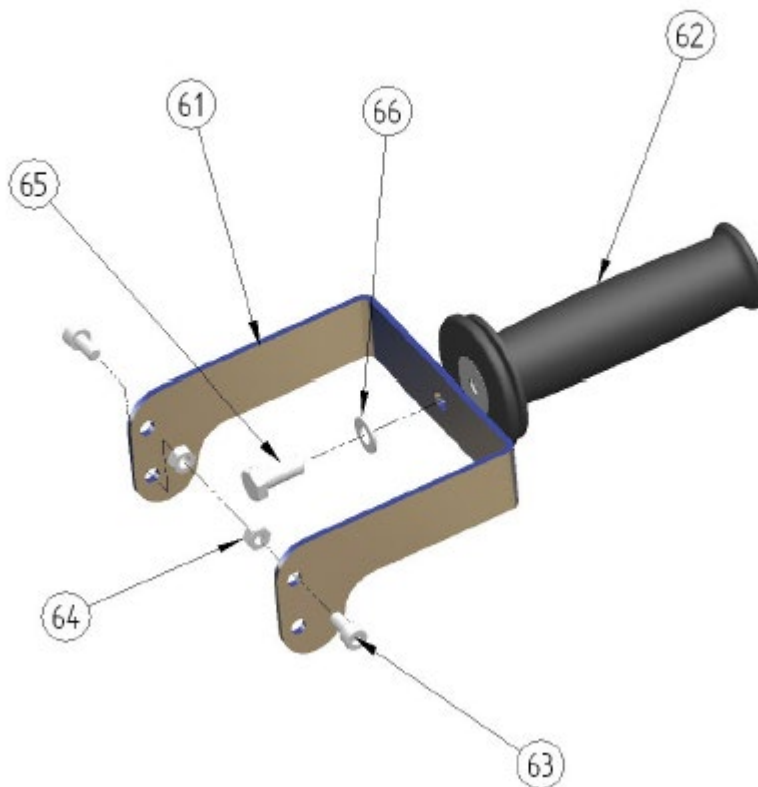
Itm	Article no	Description	Quant.
1	4202055	Exzenterwelle	1
2	4202026	Distanzbüchse	4
3	4202002/1	Anschraubplatte	1
4	4005100	Vibrationsgummi	4
5	4004000	Ausgleichsgewicht	1
6	4003100	Kugellager in Oberflansch	1
7	4003000	Oberflansch	1
8	4202006	Unterplatte gebogen	1
9	4202060	Unterflansch geschlossen	1
10	4202019	Abweisplatte	1
11	4006100	Kugellager in Unterflansch	1
12	4202018	Messerklammerplatte	1
13	4008100	Scheibenfeder für Welle (Rundkeil)	1
14	4202009	Befestigungsbügel	1
15	4202011	Strebe (Fahrgestell)	2
16	4202016	Achse (Fahrgestell)	2
17	4202015	Transportrad	2
19	200852+853	Kabelverschraubung inkl. Mutter	1
20	4200858	Wippenschalter 16A	1
21	5630812	Sechskantschraube (=Pos. 31)	4
22	5670800	Sicherungsscheibe (=Pos. 32)	4
23	5620516	Inbusschraube	4
24	5670500	Sicherungsscheibe	4
25	5640601	Sechskantmutter	4
26	5630612	Sechskantschraube	4
27	5620545	Inbusschraube	4
28	5610616	Senkschraube	2
29	5640601	Sechskantmutter	2
30	5670500	Sicherungsscheibe	4
31	5630812	Sechskantschraube (=Pos. 1)	4
32	5670800	Sicherungsring (=Pos. 22)	4
33	5631425	Sechskantschraube	2
34	5661401	Sicherungsscheibe	2
35	5620608	Inbusschraube	4
36	5620612	Inbusschraube	2
37	5630635	Sechskantschraube	2
39	4009300	U-Griff	1
40	4009700	Anbaumotor 230V 50Hz 2200W	1
41	5690812	Schraube f. U-Griff	2

8.4 Exploded drawing – Handle



Itm.	Article no.	Description	Quant.
51	4009010	Deichselrohr geschlitzt	1
52	7777777	Deichselrohr geschlitzt (kurz)	1
53	4009012	Innenverlängerung	1
54	4009040	T-Griff (geschweißt)	1
55	4009018	Gummihandgriff schwarz	2
56	4200860	Bandschelle mit Schraube + Mutter	4
57	4200870	Klemmhebel verstellbar	2

8.5 Exploded drawing – Handle for handstripper



Itm.	Articole no.	Description	Quant.
61	4202065	Handgriffaufnahme Bully	1
62	4200862+ 4009018	Handgriff mit Körper (Verwendung von Pos. 55)	(1) aus Pos.55
63	5620612	Inbusschraube	2
64	5640601	Mutter	2
65	5630820	Sechskantschraube	1

9 Warranty

This product from Scanmaskin Sweden AB comes with a twelve month warranty. If the product does not function satisfactorily during this period, Scanmaskin will return the product to full working order for normal use which the product is intended for – with no charge for labor or spare parts, according to the following conditions:

1. The warranty only applies to persons that have legal right to the equipment during the warranty period.
2. The manufacturer's undertaking is limited to the repair of defective parts or the replacement of these according to the manufacturer's assessment. Costs and risks for transport as well as dismantling and reinstallation of the product / products and other direct or indirect costs, associated with the repair in question, are not covered by this warranty.
3. Periodic inspections, adjustments, maintenance work and changes are not covered by the warranty.
4. Scanmaskin is not liable for any damages to grinding discs or other similar equipment.
5. The warranty only applies to material and design deficiencies and does not apply in the following cases:
 - a. Damage caused through accidents, carelessness, changes, use of spare parts or grinding tools that are not original components, or incorrect use and installation.
 - b. Damage caused by lightning, water, fire, vandalism, incorrect mains voltage, incorrect ventilation or other causes that lie outside of the manufacturer's control.
6. Scanmaskin reserves the right to modify the design – or make improvements without obligation to change previously manufactured products.
7. All warranty repairs must be carried out by Scanmaskin or by a Scanmaskin authorized repair workshop. Costs for repairs, carried out by an unauthorized workshop, will not be reimbursed by Scanmaskin. If such repairs damage this product these are not cover by the warranty agreement.

10 EU Declaration

Declaration of CE conformity

Manufacturer Scanmaskin Sweden AB
Address Heljesvägen 10
427 36 Lindome / Gothenburg
Sweden

Product Stripper machine

Product name Multistripper mini

Serial number _____

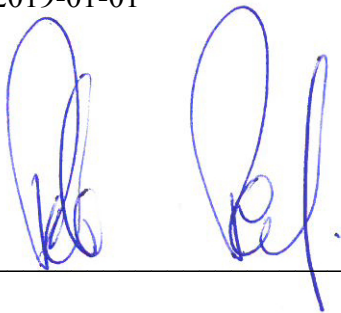
The product conforms with the following EU guidelines

Machine directives 2006/42/EG
EMC 2004/108/EG
LVD 2006/95/EG
Harmonized standards EN ISO 13850
EN ISO 12100-1/-2
EN ISO 60204-1

Location of issue Lindome / Gothenburg / Sweden

Authorized representative Paulo Bergstrand
Managing Director

Scanmaskin Sweden AB
2019-01-01



Paulo Bergstrand
Managing Director

11 Contact information

Sweden (Head Office)

Heljesvägen 10
Box 187
SE-437 22 Lindome

Phone: +46 (0) 31 99 49 70
Fax: +46 (0) 31 99 48 70
E-mail: info@scanmaskin.se
Website: www.scanmaskin.se

Denmark

Torvegade 22
DK-7330 Brande

Phone: +45 97 18 00 58
Fax: +45 97 18 45 58
E-mail: info@scanmineral.dk
Website: www.scanmaskin.se

Norway

Maridalsveien 91
NO-0461 Oslo

Phone: +47 638 76 000
Fax: +47 902 31 662
E-mail: info@scanmaskin.no
Website: www.scanmaskin.no

Finland

Raudoittajantie 3 A
FIN-06450 Porvoo / Borgå

Phone: +358 10 292 4700
E-mail: info@scanmaskin.fi
Website: www.scanmaskin.fi

USA

18868 72nd AVE S
WA-98032 KENT

Phone: +1 425 209 0147
Fax: +1 425 209 0133
E-mail: info@scanmaskin.com
Website: www.scanmaskin.com